

Directions to Saunders River Access

Attached is a map of the Saunders River Access, and the farm lane leading from Route 116 to the kiosk.

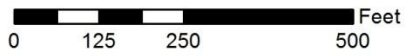
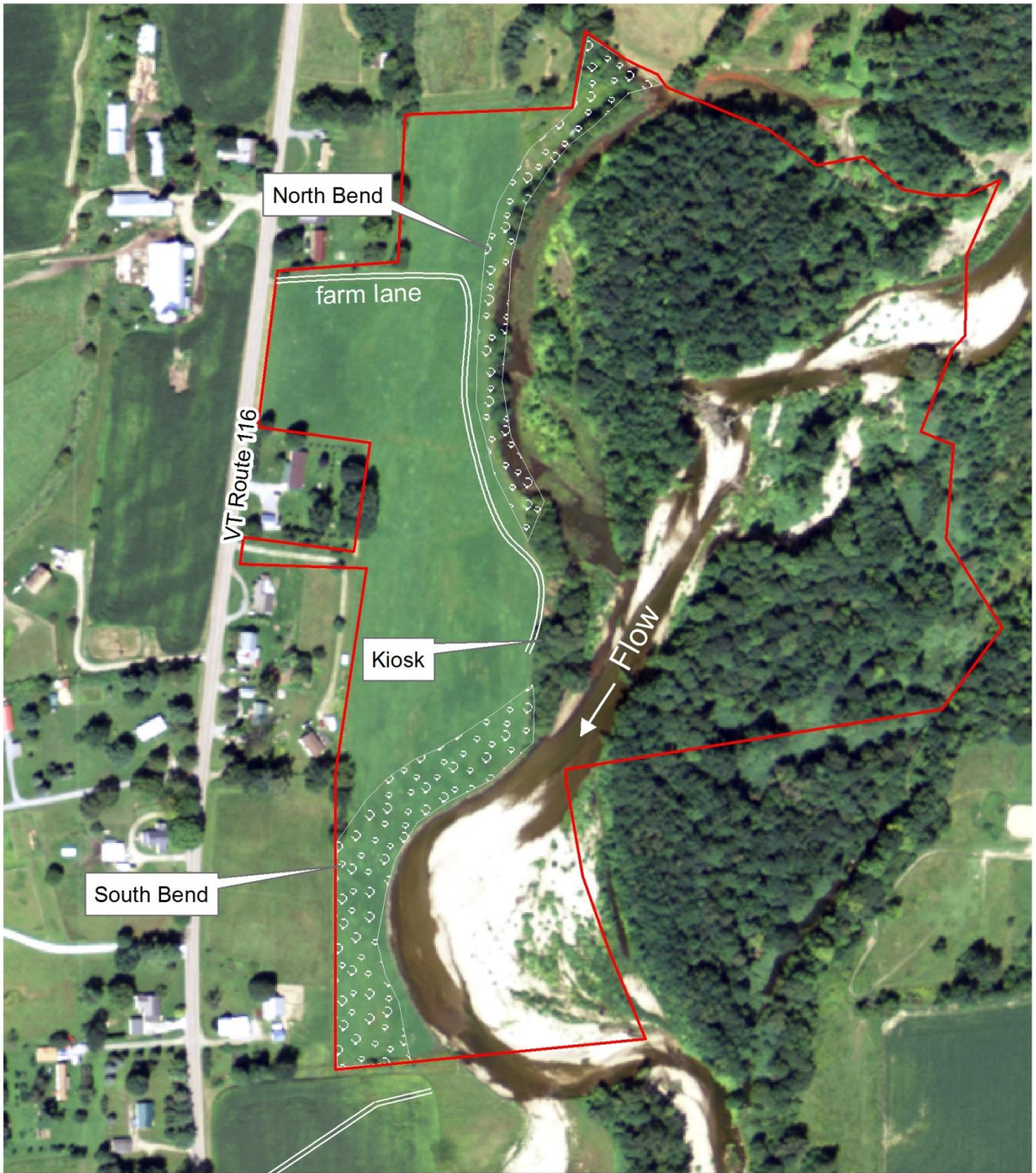
The farm lane leading into the kiosk at the Saunders River Access is located at approximately 1160 South 116 Rd, directly across from the barns and silos of the Saunders farm. There is a small, orange utility post on the shoulder of Rt 116 that marks the lane. As yet, there is no signage identifying this as the entrance to the Saunders River Access. Turn onto the farm lane and drive through the hay meadow - **please follow the laneway** so as not to unnecessarily trample the hay crop.

From the South:

Heading North on VT Route 116 from Middlebury, cross over the New Haven River on the new bridge at Sycamore Park in Bristol. Continue approximately 1.1 miles to the north. **Turn right** onto the farm lane from Route 116.

From the North:

Heading South on VT Route 116 from Bristol village, turn left at the red blinking light, at the Junction of VT Routes 116 and 17, to stay on VT Rt 116. Continue approximately 1.2 miles to the south. **Turn left** onto the farm lane from Route 116.



Saunders River Access

Off VT Route 116 South, Bristol, VT

LAT/LON: 44.10916136 / -73.09561774
Base Map: August 2011

	Farm Lane
	Protected Property
	Riparian Planting